



TEAM JACKET [ROYAL BLUE] \$50

includes team logo on front left chest & IRC on the back

- Outer Shell: 100% Polyester Jacquard micro fibre
- Lining: 100% BIZ COOL™ anti-snag diamond mesh
- Grid mesh underarm panels for breathability
- Stow-away hood
- Adjustable Velcro cuff

SIZES	XS	S	M	L	XL
GARMET 1/2 CHEST (CM)	58cm	60cm	62cm	64cm	66cm



TEAM PANT [NAVY] \$30

- Outer Shell: 100% Polyester Jacquard micro fibre
- Lining: 100% BIZ COOL™ anti-snag diamond mesh
- Elasticated waist with inside tie
- 1/2 zippered leg

SIZES	XS	S	M	L	XL
GARMET 1/2 WAIST RELAXED (CM)	31cm	33cm	35cm	37cm	39cm



HOODIE PULLOVER [NAVY] \$35

includes team logo on front left chest & IRC on the back

- 100% Polyester fleece
- Kangaroo front pocket
- Drawstring in hood

SIZES	S	M	L	XL
GARMET 1/2 CHEST (CM)	57cm	60cm	63cm	66cm



BACKPACK [NAVY] \$27

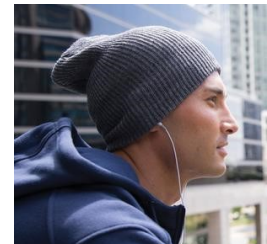
includes team logo

- Padded airflow mesh back panel
- Ergonomic, adjustable shoulder straps
- Side-mesh water bottle pocket
- Media compartment/earphone port
- Stabilising rubber feet & durable base
- 13.8in [L] x 17.8in [H] x 9.9in [D]



HAT [NAVY] \$9

includes team logo



BEANIE [NAVY] \$9

includes team logo